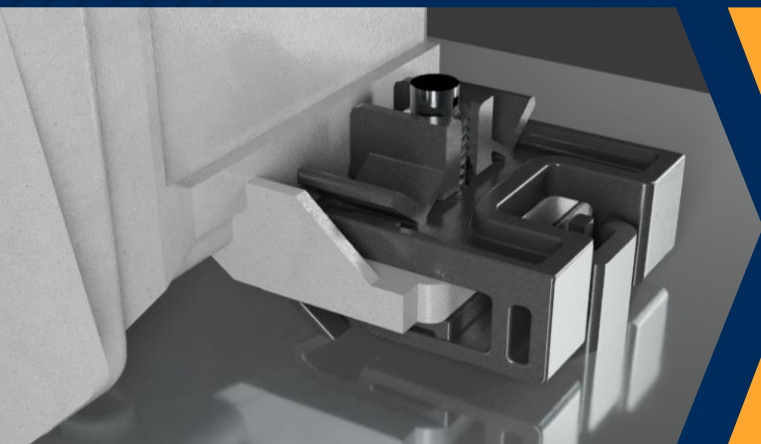


PLASTIC U NUT FOR STUD

Our part allows you to **quickly and securely** assemble an electronic housing to a stud, without tightening a nut, while ensuring **reliable retention** and **immediate visual control** of the clip engagement.

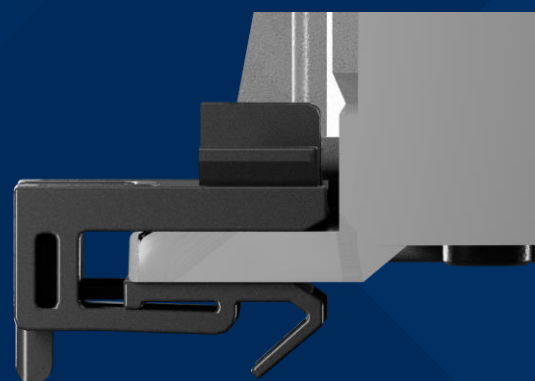
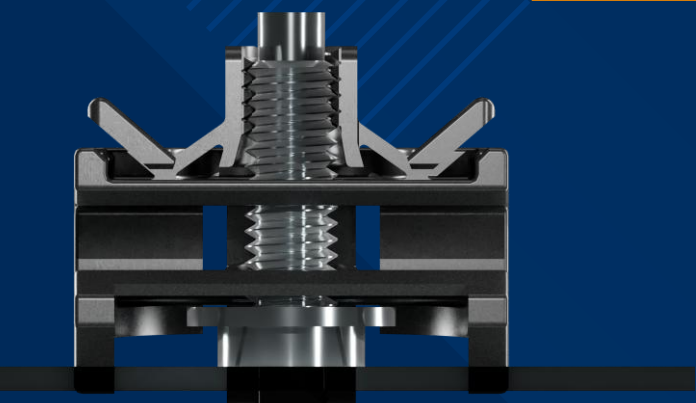


+ Advantages

- ✓ Quick installation
- ✓ High retention
- ✓ Visual inspection of assembly
- ✓ Easy (dis)assembly
- ✓ Increase productivity

Specifications :

- Compatible panel thicknesses 3 à 4mm
- Ensures that the box stays in position
- Quick fastening without screwing
- M6 thread



Applications :



Mounting of all types of electronic housings on studs in automotive environments, panel-edge installation, and additional application cases available based on your needs.