



Removable Bird's Beak

Description:

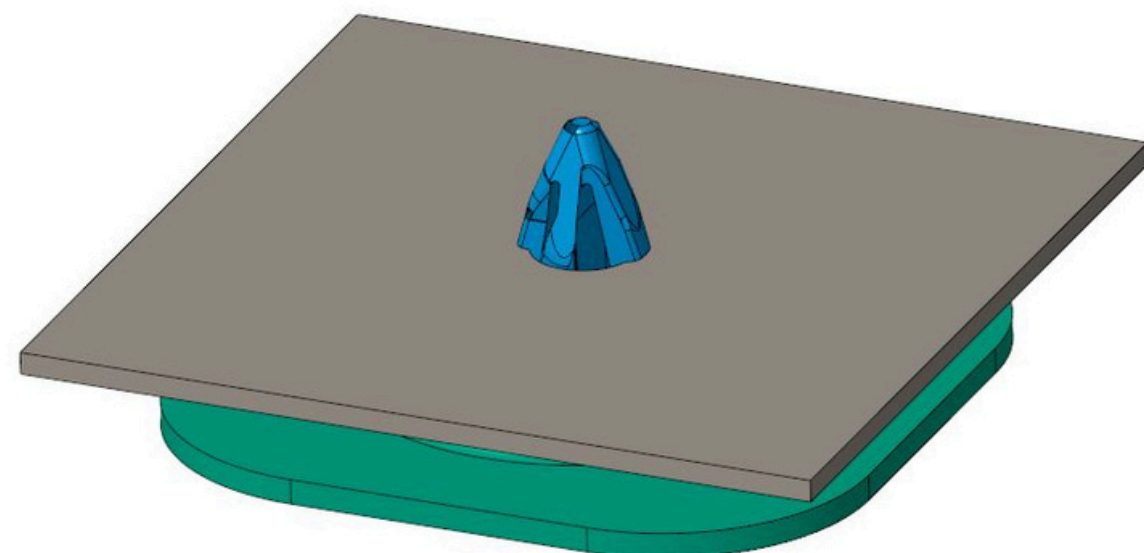
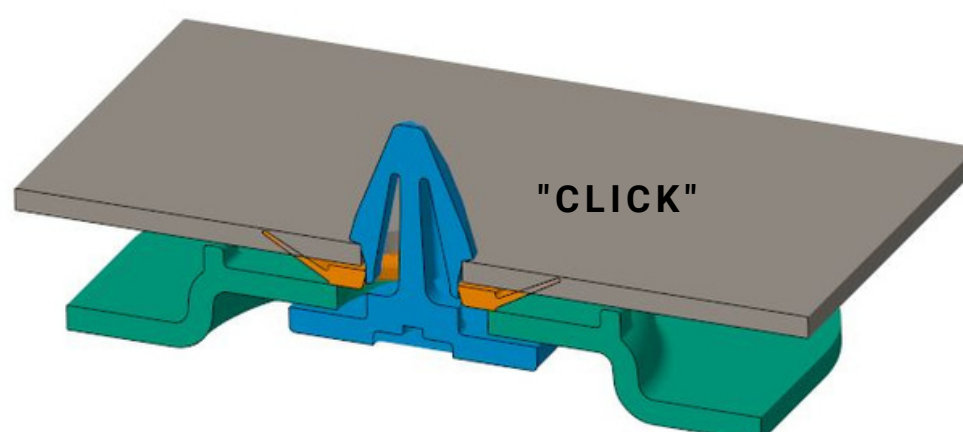
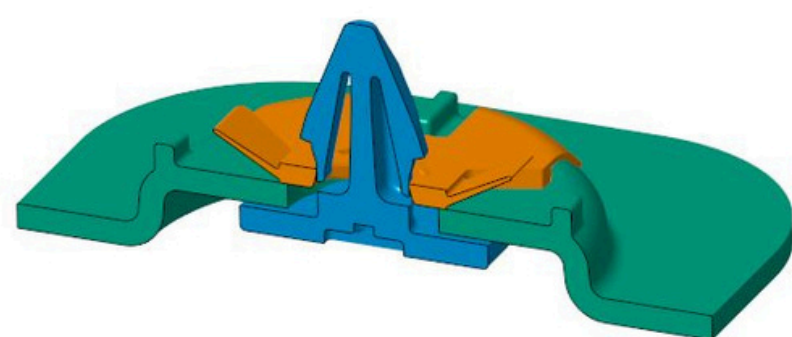
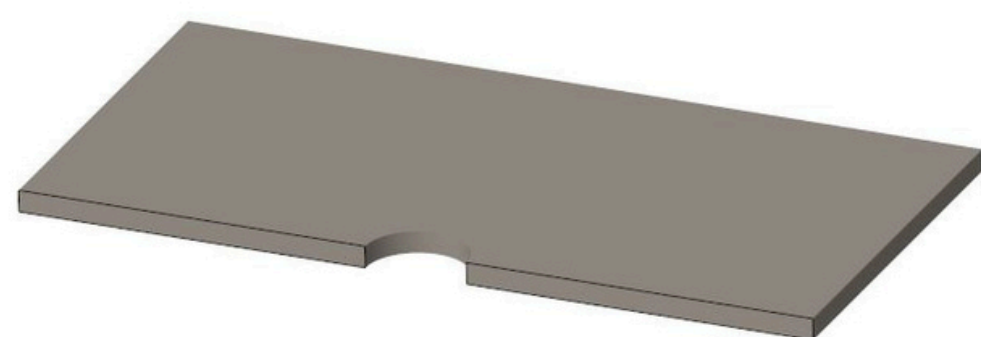
The Removable Bird's Beak is a fastening system designed to replace traditional screws, nuts, and washers in the assembly of panels and protective elements. Thanks to its pre-loading feature and push-to-lock mechanism, it allows for quick installation without the need for special tools, thereby reducing assembly time. The clips provide a strong and long-lasting assembly. Its quarter-turn release mechanism is easy to disassemble and reuse, preventing component loss.

FUNCTIONING:

1. Initial position

2. Final position

- Turn 1/4 turn with a screwdriver
- Audible "click" to indicate the panel is secured



ADVANTAGES

Easily
removable

Fatigue
Reduction

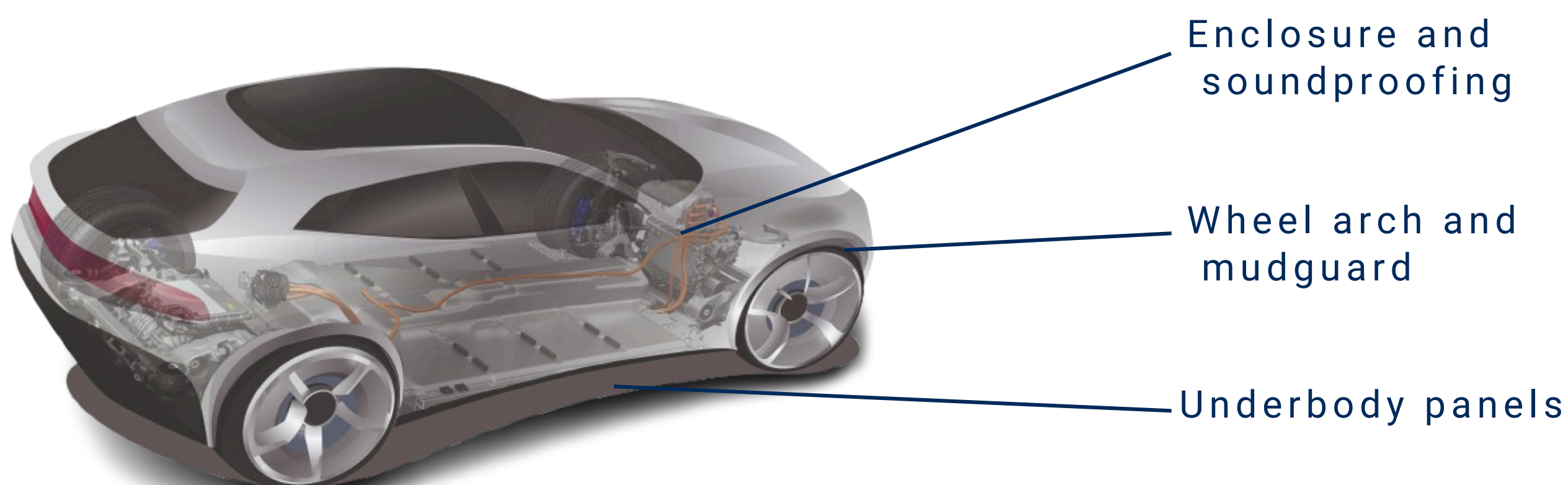
Reduced
assembly time

Weight
Reduction

Extraction force
> 50 daN

Assembly force
< 5 daN

APPLICATIONS:



Watch our video!

